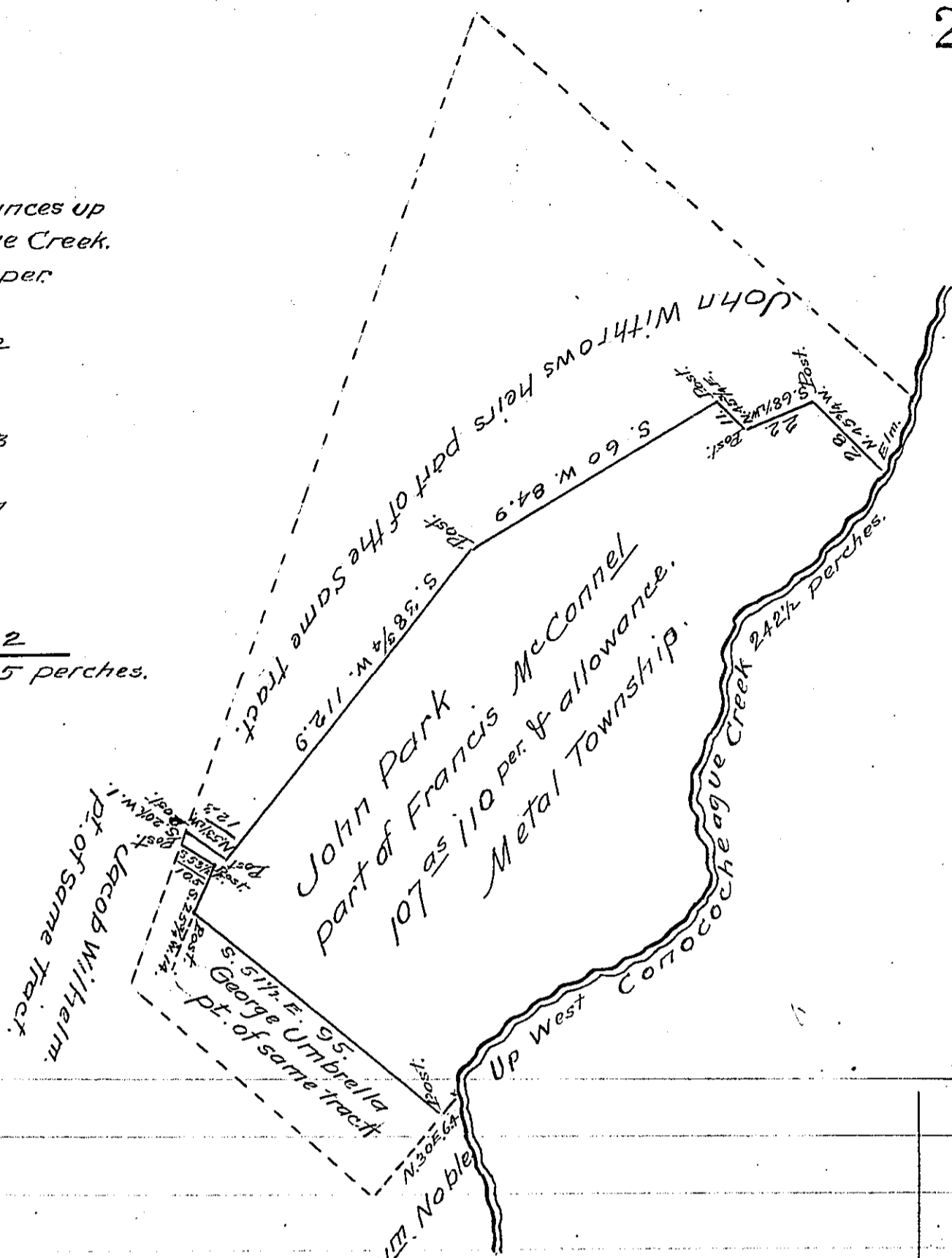


Courses & distances up  
Conococheague Creek.

- N. 10 W. - 8 per.
  - N. 50 E. - 32
  - N. 65 E. - 30.2
  - N. 62 E. - 13.1
  - N. 42 1/4 E. 17.
  - N. 19 W 26.3
  - N. 13 E. 10.
  - N. 27 E. 13.7
  - NORTH 11.
  - N. 11 E. 20.
  - N. 57 E. 20.
  - N. 45 E. 41.2
- 242.5 perches.



*Draught of a tract of Land in Metal (formerly Farnet) Township Franklin County Pa. Containing one hundred and seven acres & one hundred and ten perches & allowance of six per Cent for Roads &c. being part of 209 1/2<sup>as</sup> survey'd in pursuance of an order of Survey granted to Francis Mc Connel dated June 26<sup>th</sup> 1766. No 1227. Surveyed the above part for John Parks August 31<sup>st</sup> 1864.*

*To James P. Barr Esq<sup>r</sup>.  
Surveyor General*

*Emanuel Kuhn C.S.*

*IN TESTIMONY that the above is a copy of the original remaining on file in the Department of Internal Affairs of Pennsylvania, made conformably to an Act of Assembly approved the 16th day of February, 1833, I have hereunto set my Hand and caused the Seal of said Department to be affixed at Harrisburg, this eighteenth day of July 1906.*

*Loach, Brown*  
Secretary of Internal Affairs.